



# **We move the earth**

## Continental Earthmover Tires









# Continental's Tire Portfolio for the Earthmoving Industry







Continental is a global player in tire manufacturing. We design, develop, and produce a wide range of superior products for almost every form of mobility. From high-performance bicycles, to high-horsepower specialty mining equipment, we have a solution for almost every need.

Our focus on customer needs drives the development and production of cross-ply, radial, and solid tires. This enables us to offer tires that exactly match the requirements and demands of our customers.

Continental's Earthmoving tire range is specifically designed for application in the very harsh conditions of surface and underground mining as well as quarries and construction sites. Continental EM- and MPT-Tires are made to meet the highest level of performance, safety, and durability for every application, even in the harshest of conditions. We're sure that you will find the perfect tire to meet your individual needs within this brochure.



# The Earthmoving Tire Portfolio

Radial Tires	RDT-Master	EM-Master E4/L4 EM-Master E3/L3 DumperMaster	DumperMaster DumperMaster LC	EM-Master E4/L4 EM-Master E3/L3 EM-Master L3 DumperMaster LD-Master Traction LD-Master Rock	
V.ply Tires					ScoopMaster 
Solid Tires					
					
	Rigid Dump Truck (RDT)	Articulated Dump Truck (ADT)	Underground ADT	Loader	Underground Loader (Scoop)

## Radial Tires

### RDT-Master



### EM-Master

E4/L4   E3/L3   L3



### DumperMaster



### LD-Master

Traction   Rock









### CompactMaster

EM   AG





	<div>CompactMaster EM</div> <div>CompactMaster AG</div> <div>70E</div>	<div>CompactMaster EM</div> <div>CompactMaster AG</div> <div>MPT81</div> <div>MPT80</div> <div>70E</div>		<div>MPT81</div> <div>MPT91</div>
<div>DrillMaster</div> <div></div>				
	<div>TeleMaster</div>		<div>CompactMaster SkidSteer</div>	
				
Drill Rig & Bolter	Telehandler	Compact Loader & Backhoe Loader	Skidsteer Loader	Multi Purpose Vehicle







## ContiEarth RDT-Master

Rigid dump trucks are built to haul continuously heavy loads over longer distances. In these severe applications tires have to offer high stability and good traction even at higher speeds. In addition, the tires need to be extremely resistant to cut and tear. The RDT-Master is the perfect fit for transporting extra-heavy loads in adverse conditions. The special tread design with a deep tread depth and a wide and flat tread radius offers a high load capacity, excellent wear picture and good self-cleaning characteristics. The angled edges and the open shoulder design allow high lateral stability leading to better manoeuvrability and control when cornering.





For RDT

## RDT-Master

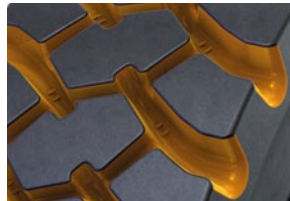
Dimension	Compound	TRA	Type
18.00R33	ST	E4	TL
	CR	E4	TL
21.00R33	ST	E4	TL
	CR	E4	TL
24.00R35	ST	E4	TL
	CR	E4	TL

**ST** Standard Compound

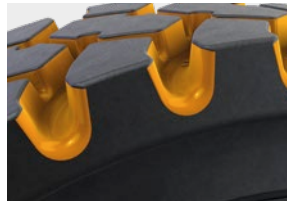
**CR** Cut Resistant Compound



### Features and benefits



High carcass protection against cuts and damage by foreign objects due to deep tread



Open shoulder design leads to perfect self-cleaning and enhanced traction

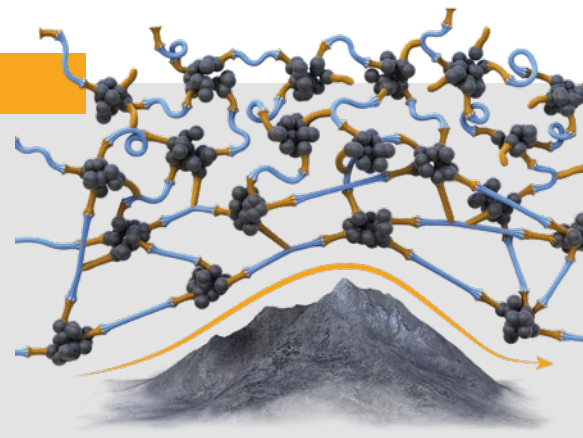


Wide tread with flat radius for maximum traction

### Cut Resistant Compound

Polymer meshing system flexes over rough surface and obstacles keeping its structure after pressure release.

Extraordinary resistance to surface stress.







## ContiEarth EM-Master

ADTs, loaders, and dozers are used for transporting large quantities of bulk or aggregate material in extreme conditions ranging from soft and muddy soil to gravelly and rocky terrain in construction or mining sites. Durability, excellent traction, and superior resistance to rock cutting and heat generation are essential to operate under extreme offroad conditions.

Continental's EM-Master is optimized for these specific demands. The tire is available in two versions with different tire tread designs. The EM-Master E3/L3 features a normal tread depth and wide spacing between the blocks. This results in excellent self-cleaning characteristics, good traction, and manoeuvrability even on sand or muddy terrain. The EM-Master L3 offers a lighter version of the tire, which is specially designed for the use on loaders. The Conti EM-Master E4/L4 provides a smaller spacing between the blocks offering smooth running on hard surfaces. The deep tread depth results in a high protection against cuts and object penetrations.





For ADT and Loader

## EM-Master E4/L4

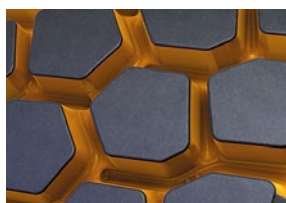
Dimension	TRA	Type	Dimension	TRA	Type
23.5R25	E4/L4	TL	750/65R25	E4/L4	TL
26.5R25	E4/L4	TL	875/65R29	E4/L4	TL
29.5R25	E4/L4	TL			



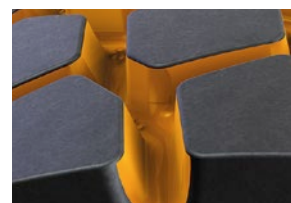
### Features and benefits



Tread blocks with multiple gripping edges result in powerful traction on gravelly and rocky terrain



Wider blocks and therefore less void than E3/L3 version for more carcass protection and smoother running



More wear volume than E3/L3 version due to deep tread design



For ADT and Loader

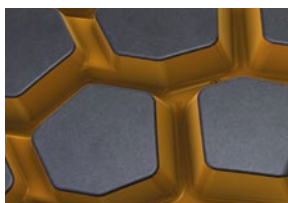
## EM-Master E3/L3

Dimension	TRA	Type	Dimension	TRA	Type
17.5 R 25	E3/L3	TL	750/65R25	E3/L3	TL
20.5 R 25	E3/L3	TL	775/65R29	E3/L3	TL
23.5 R 25	E3/L3	TL	875/65R29	E3/L3	TL
26.5 R 25	E3/L3	TL			
29.5 R 25	E3/L3	TL	20.5 R 25	L3*	TL

\*for loader applications.



### Features and benefits



Tread blocks with multiple gripping edges for powerful traction on soft and muddy terrain



Wide space between blocks for outstanding self-cleaning abilities & low heat build-up



Connection between center blocks for improvement of traction capabilities & for smooth running





## ContiEarth LD-Master

The LD-Master L5 class is engineered for heavy loaders operating under most demanding conditions in construction or mining applications. Its strong carcass and extra deep tread pattern assure excellent protection and thus continuous vehicle uptime when the going gets rough. "Stay productive and in control!" - The LD-Master comes with highest 3 star load carrying capacity, ContiConnect tire sensor and an ultra cut resistant tread compound to master every load challenge.





For Loader

## LD-Master Traction

Dimension	TRA	Type
23.5 R 25	L5	TL
26.5 R 25	L5	TL
29.5 R 25	L5	TL
<b>875/65 R 29</b>	<b>L5</b>	<b>TL</b>
35/65 R 33	L5	TL

■ In preparation.



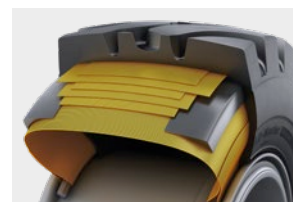
### Features and benefits



Extra deep tread and side-wall protection for assured productivity.



Bidirectional, massive tread block design for always assured traction.



Reinforced 3\* carcass. The extra reserve for highest load requirements.



For Loader

## LD-Master Rock

Dimension	TRA	Type
<b>26.5 R 25</b>	<b>L5</b>	<b>TL</b>
<b>29.5 R 25</b>	<b>L5</b>	<b>TL</b>
35/65 R 33	L5	TL

■ In preparation.



### Features and benefits



Extra deep tread and reinforced sidewall for maximum protection when operating under harsh facework conditions or in mining.



A strong casing provides additional load capacities which lead to high productivity in operation.



The solid lug design ensures safe handling in every application and in all conditions.





# **ContiMine** Underground Mining Solutions









## ContiMine DumperMaster

Engineered for ADTs (Articulated Dump Trucks) or heavy loaders operating under harshest conditions in construction or mining applications. High load carrying capacity as well as the robustness of the tread and carcass are key criteria for the right tire choice. Continental's DumperMaster is customized for these specific demands and comes with a four star carcass design and ultra cut resistant tread compound to master the application.





For ADT and Loader

## DumperMaster

Dimension	Compound	TRA	Type
26.5R25	CR	E4/L4	TL
29.5R25	CR	E4/L4	TL
35/65R33	CR	E4/L4	TL
	LC	E4/L4	TL

**CR** Cut resistant compound

**LC** Long Cycle. Specialized for ADT operations  
hauling of up to 14 km distance per hour.



### Features and benefits



Tread design for carcass protection and long service life



Robust sidewall for better carcass protection against impacts and cuts



Carcass construction for maximum load capacity (based on inflation pressures up to 8 bar/116psi)

Open shoulder design for good self cleaning abilities and traction

### Underground ADT Haulage



DumperMaster\*

DumperMaster LongCycle

**+40%**

\* approx. 10 km distance per hour for ADT hauling operations



## Every angle of our tires is special. Even those you can't see.

Originally inspired by racing tire design, the innovative V.ply technology enhances the cross-ply technology with multiple cords arranged in a recognizable V-shaped angle. V.ply technology combines extraordinary robustness and tire stability with great rim seat, force transmission and steering response in demanding vehicle operations. The sharper angle of the carcass layers also means that the tread rubber gets slightly compressed, which is a major advantage in rough applications like underground mines where freshly blasted rocks are a constant danger to tires. The tread cuts that these rocks generate are very hard to avoid but the growth of these cuts can be reduced by the compressed tread rubber. ContiCutCompress cannot eliminate the risk of tire damages but certainly reduces the growth of tread cuts and therefore improves the tire performance.

### 1 Breaker layers

Up to four V.ply breaker layers not only provide additional rigidity to the tread area, but they also function as an excellent bonding element between the outer rubber tread and inner polymer structure.

### 2 V.ply construction

Up to 20 layers of high-resistance polymer fiber are aligned in a specially angled V-pattern. This unique technology is inspired by racing tire design and means less inner movement for low rolling resistance.

### 3 Profiled inner bead

In contrast to beads with a single round wire, the V.ply design is based on up to three bead wire bundles. The result is a wide bead, which provides even load distribution and perfect rim fit.

### 4 Strengthened sidewalls

The V.ply technology allows for the design of exceptionally strong sidewalls. They provide low deflection for high damping, excellent driving stability, and nearly unmatched protection against damage.









A large yellow mining loader is shown in an underground mine. The focus is on a large, heavy-duty tire with the 'Continental' and 'ScoopMaster' branding. The tire is covered in mud and debris. In the background, another piece of mining equipment is visible in the dimly lit tunnel.

# ContiMine ScoopMaster

Loaders or Scoops transport heavy loads of orebodies at low speeds over a relatively short distance to dump trucks or conveyor belts. They often face freshly blasted, sharp rocks in wet and abrasive conditions. Durability, traction, and even wear are the most important tire features.

Continental's ScoopMaster was developed to last in this extremely harsh underground mining environment. Premium quality tread and sidewall rubber compounds provide maximum resistance to rock cutting, penetrations, and tearing. The special V-ply construction in combination with the carcass rubber compound provides high carcass strength, excellent flex fatigue, and sidewall damage resistance.



For Underground Loader

## ScoopMaster

Dimension	TRA	Type	PR
12.00 - 24	L5S	TT	20
17.5 - 25	L5S	TL	20
18.00 - 25	L5S	TL	28
26.5 - 25	L5S	TL	36
<b>29.5 - 25</b>	<b>L5S</b>	<b>TL</b>	<b>34</b>

■ In preparation.



## Features and benefits



Maximum casing protection against punctures and impacts

Wide contact area for reduced slippage, good traction, and even wear

High wear volume for optimum mileage performance



Additional cut-resistant rubber rib to protect casing in sidewall area where sharp rocks can damage the tire

Cut-resistant rubber compound for sidewall protection



Tread wear indicator (TWI) designed for easy and fast tread depth measurement

TWI shape prevents stone catching and carcass penetration





## ContiMine DrillMaster

Specialized machines like Drill Rigs, Scalers, or Bolters are required for blast hole drilling in order to prepare for detonation, removal of loose rock after blasting, or the installation of rock bolts to support the roof. To drill blast holes as economically as possible, Drill Rigs cover rock cross sections of a hundred square meters and more. Therefore, the Drills use up to four booms, which result in very high tire loads when moving. High cutting resistance, good traction, and stability are essential for tires used in these applications.

The Continental DrillMaster with its V-ply construction is the perfect choice: a highly cut-resistant rubber compound protects the carcass during operation in freshly blasted rocks. The tire carcass is designed to stand heavy loads. The innovative zigzag tire tread design offers the maximum amount of gripping edges in all directions to manage steep inclination and declination with tight cornering safely.



For Drill Rig and Bolter

## DrillMaster

Dimension	TRA	Type	PR
12.00-24	L4	TL	28
14.00-24	L4	TT	30

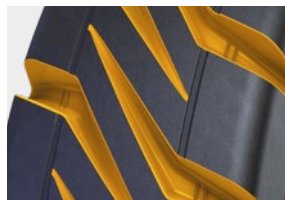


### Features and benefits



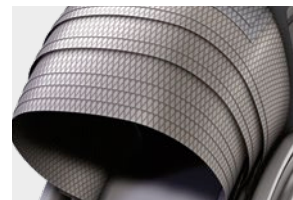
Zigzag design with multiple edges for maximum traction in circumferential and lateral direction

Connected tread block for increased stability especially during tight downhill cornering



Round shaped tread groove to reduce stone trapping

Extensive siping ratio of tread for high amount of gripping edges



High load capability due to V-ply carcass construction

Low heat build-up when driving long distances



# Compact Construction





For Telehandler &amp; Backhoe Loader on Hard Grounds

## CompactMaster EM

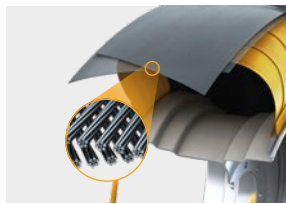
The CompactMaster EM is a compact construction tire developed for telehandlers operating on paved surfaces, asphalt, sand and gravel.

Dimension	TRA	Type
460/70R24 (17.5LR24)	R4	TL
500/70R24 (19.5LR24)	R4	TL

### Features and benefits



Turtle Shield Shaped Tread Base Line protects shoulder area against penetration and cuts by foreign objects



High stiffness of tire in lateral direction and protection in center area against foreign objects due to Twisted Steel Belt



Finely structured blocks with high amount of rubber volume for easy turning on the spot

For Telehandler &amp; Backhoe Loader on Paved Grounds

## CompactMaster AG

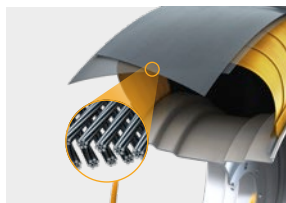
The CompactMaster AG is a compact construction tire developed for telehandlers operating on fields, grassed land and on loose grounds.

Dimension	TRA	Type
460/70R24 (17.5LR24)	R4	TL
500/70R24 (19.5LR24)	R4	TL

### Features and benefits



Turtle Shield Shaped Tread Base Line protects shoulder area against penetration and cuts by foreign objects



High stiffness of tire in lateral direction and protection in center area against foreign objects due to Twisted Steel Belt



Wide lugs and wide lug base lead to high traction on muddy grounds and ensure a good self-cleaning behavior

For Skidsteer Loader

## CompactMaster SkidSteer

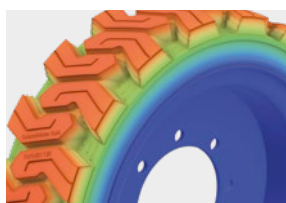
The CompactMaster SkidSteer is a solid tire for tough skid steer use, offering high durability, puncture resistance, and zero maintenance.

Dimension	Type
31x10-20/7.50	SD
33x12-20/7.50	SD

### Features and benefits



The bi-directional pattern with large traction blocks and S-shaped lugs delivers excellent traction and effective self-cleaning performance.



The cool-running design with low rolling resistance and a solid layer structure minimizes heat build-up, ensuring a long service life.



The robust solid tire construction provides excellent durability and reliable protection against cuts and damage in rough terrain.



# Compact Construction





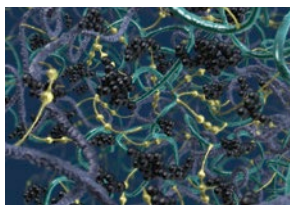
For Multi Purpose Vehicles

## MPT91

The MPT91 has been specially developed for the most challenging and versatile multipurpose applications.

Dimension	Type
275/80 R 20	TL
365/80 R 20	TL

### Features and benefits



High efficiency polymer compound technology - featuring a specialized active filler network for reduced crack propagation and high mileage performance especially on hard surfaces



A special rubber embedded steel cord reinforcement assures optimal bead stiffness and withstands highest shear forces



Multiple block geometries for excellent traction and self-cleaning capabilities

High Load capability due to StaBL Technology

For Compact &amp; Backhoe Loader

## MPT81 & MPT80

The MPT81 tire is designed for mixed on-/off-road use with a strong emphasis on tough conditions. The MPT81 is suitable on various ground surfaces and especially on snow.

The MPT80 is a tire with good off-road attributions and economical benefits.

### MPT81

Dimension	Type
315/55R16 MPT	TL
275/80R20 MPT	TL
335/80R20 MPT	TL
365/80R20 MPT	TL

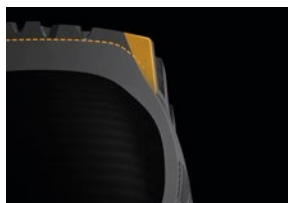
### MPT80

Dimension	Type
10.5R20 MPT (275/80R20)	TL
12.5R20 MPT (335/80R20)	TL
14.5R20 MPT (365/80R20)	TL

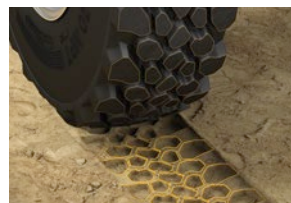
### Features and benefits



High performance on any surface due to our multi-functional tread design with three variations in tread depths



Turtle Shield protects upper sidewall and shoulder area for high robustness and puncture resistance



Multiple block geometries for excellent self-cleaning capabilities and high traction abilities

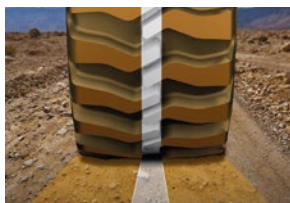
For Compact Loader &amp; Backhoe Loader

## 70E

The 70E tire is designed for tough off-road and construction-site usage on small construction vehicles.

Dimension	Type
325/70R18 MPT	TL
365/70R18	TL
335/80R20	TL
365/80R20	TL
405/70R20	TL

### Features and benefits



Two-fold pattern design leads to high work efficiency and low fuel consumption due to dense block configuration with open outer tread design



High traction capability in forward and backward direction ensures high work efficiency due to symmetric pattern design



Bead protection of sidewall reduces risk of flat tire



# Compact Construction



## TeleMaster

Telehandlers can be found in various industries such as construction, agriculture or forestry. They are used to lift and transport heavy loads in varied terrain and hard-to-reach areas. They are also applicable in warehousing to efficiently stack and move pallets and other goods.

The Continental TeleMaster solid tire has been specially developed for demanding applications where the risk of damage is high and robust, maintenance-free performance is required. The advanced, solid three-layer construction also ensures a comfortable ride and a long service life.



For Telehandler

## TeleMaster

The TeleMaster is a solid tire that was developed for the specific demands of telehandler users.

Dimension	Type
315/95-28	Solid
360/85-28	Solid
315/85-20	Solid



### Features and benefits



The advanced solid three layer construction delivers a comfortable ride and offers a long service life



The reinforced sidewalls prevents punctures and cuts



The circumferential rib tread pattern ensures high traction in both directions



# Driven by Data

## Intelligent Earthmoving Benefits of digital tire monitoring

When transporting heavy loads on rough terrain, the tires of the vehicles are permanently under pressure, day in and day out. Driving with underinflated or overheated tires will lead to an increased fuel consumption and can cause premature tire failures - a serious concern for the vehicle safety in your daily operations. As a mandatory consequence the inflation pressure and temperature should be monitored constantly. All Continental radial earthmoving tires are therefore equipped with our premounted sensors. These sensors transmit data in real time to our stand alone or complete fleet monitoring solutions of your choice. Time consuming, manual tire checks become redundant.



# Why Digital Tire Monitoring?

## One Example: Savings for a fleet of 15 vehicles.



# 1%

increase in  
fuel efficiency<sup>1</sup>



# 15 Min

saving for vehicle inspection  
(195 hours/year)<sup>2</sup>



# 15%

longer tread life<sup>1</sup>

<sup>1</sup> vs. a tire that is 10% underinflated | <sup>2</sup> Analysis by Continental based on customer experiences

## Challenges



**Harsh conditions** that challenge the tire increase the likelihood of tire failure.



Vehicles transport **heavy materials** on tough road surfaces.



Lateral forces while cornering and operating speeds lead to **high temperatures** in tires.



In vehicles operation the tire temperature is increasing which leads to increasing **inflation pressure**.



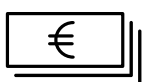
**Lack of time** for frequent manual tire checks.

Need to focus on core business.

## Solutions

- Receive e-mail and SMS alerts or check your tire pressure in the web portal and mobile app before vehicles leave the depot to help prevent breakdowns in operation.
- Properly inflated tires save you 1 % on fuel compared to a tire just ten percent underinflated. Additionally, it increases casing life by up to 20 %.\*
- Monitor tire information of entire fleet in web portal and mobile app.
- Get precise information on the tires' temperature to help prevent tire damages and breakdowns.
- Ensure correct inflation pressure during vehicle operations. Get system-supported tire information to increase safety & save working hours by eliminating manual pressure checks.

## Benefits



**Increase efficiency**



**Keep track of  
your assets**



**Maximize uptime**



**Safety**



**Sustainability**

\* Please refer to the tire manufacturer's load and inflation information to determine the tire's weight capacity and proper air pressure.



# ContiConnect Pro

## Tire sensor

Mounted onto the inner liner:  
**measures pressure and temperature** from inside the tire.



## PressureCheck

is the perfect single vehicle solution for monitoring tire pressure and temperature by using one of the following options:  
**Hand-Held tool, Dashboard display or into on-board (telematics) system.**

## Yard





is the solution for multiple vehicles, which regularly return to dedicated checkpoints. The **Yard Reader Station** collects the data of your vehicles wirelessly and transmits it to the ContiConnect web portal.

## Live

is the optimal solution for the continuous monitoring of tire pressure and temperature for multiple vehicles, each equipped with a **Central Control Unit** or in-cabin unit or trailer unit, wherever they operate. The data is automatically uploaded to the ContiConnect Web portal and mobile app.

Sensor mounting is foreseen for 15" and above for pneumatic radial tire in tubeless applications. In case of further question to sensor (like mounting in cross-ply / bias tires) please contact your local Commercial Specialty Tires (CST) Technical Customer Services or send an email to [specialtytires@conti.de](mailto:specialtytires@conti.de).

## Components needed for ContiConnect Pro

	PressureCheck	Yard	Live
<b>Wheel Loader</b> 	<ul style="list-style-type: none"> <li>● <b>Base Kit CCU with receiver</b></li> <li>● <b>Base Kit Display</b> or 3rd Party Telematic Harnesses</li> <li>● <b>OTR patches</b> <b>incl cont blue + sensor</b> according to amount of wheels</li> </ul>	<ul style="list-style-type: none"> <li>● <b>KIT Yard Reader Solution GSM</b></li> <li>● <b>OTR patches</b> <b>incl cont blue + sensor</b> according to amount of wheels</li> </ul>	<ul style="list-style-type: none"> <li>● <b>Live Trailer</b></li> <li>● <b>Live Enabler Kit</b> optional</li> <li>● <b>OTR patches</b> <b>incl cont blue + sensor</b> according to amount of wheels</li> </ul>
<b>Dump Truck</b>   	<ul style="list-style-type: none"> <li>● <b>Base Kit CCU with receiver</b></li> <li>● <b>Base Kit Display</b> or 3rd Party Telematic Harnesses</li> <li>● <b>OTR patches</b> <b>incl cont blue + sensor</b> according to amount of wheels</li> </ul>	<ul style="list-style-type: none"> <li>● <b>KIT Yard Reader Solution GSM</b></li> <li>● <b>OTR patches</b> <b>incl cont blue + sensor</b> according to amount of wheels</li> </ul>	<ul style="list-style-type: none"> <li>● <b>Live Trailer</b></li> <li>● <b>Live Enabler Kit</b> optional</li> <li>● <b>OTR patches</b> <b>incl cont blue + sensor</b> according to amount of wheels</li> </ul>
	<ul style="list-style-type: none"> <li>● <b>Basic Kits</b></li> <li>● <b>Sensor Kits</b></li> <li>● <b>Advanced Kits</b></li> </ul>		

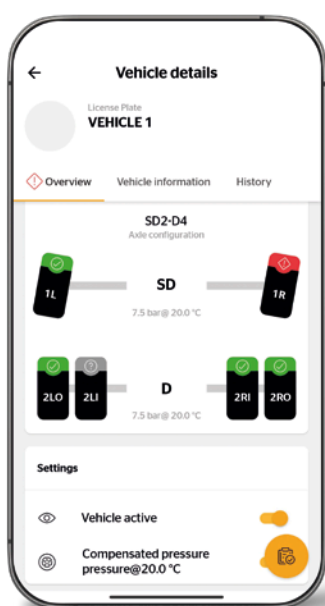
For a detailed overview description and article numbers, please go to page 39.



# ContiConnect Lite

## Tire sensor

Mounted onto the inner liner:  
**measures pressure and temperature** from inside the tire.



Experience the benefits of wireless tire management with **ContiConnect Lite at no extra cost**. All you need is sensor-equipped intelligent tires with Bluetooth connectivity.

## Our offer:

- Easy vehicle management
- Seamless communication via bluetooth
- Real-time notifications about tire health

*All Continental radial Earthmoving tires are equipped with an intelligent tire sensor that provides data in real time to ensure optimal tire pressure and temperature*





# Technical Data

## ContiEarth

### RDT-Master

Radial Tire

Tire size	TRA code	Type	Transport		Loader		Rim	Overall diam. mm (inch)	Overall width mm (inch)	Tread depth mm (32")	Article no.	
			SR/PR	LI/SS	SR/PR	LI/SS						
33 inch												
18.00 R 33	E4	TL	2*	191B			33 - 13.00/2.5	1865 (73.4)	517 (20.4)	54.0 (68/32nd)	1270554	available
18.00 R 33 CR	E4	TL	2*	191B			33 - 13.00/2.5	1865 (73.4)	517 (20.4)	54.0 (68/32nd)	1270557	available
21.00 R 33	E4	TL	2*	200B			33 - 15.00/3.0	1990 (78.3)	598 (23.5)	58.0 (73/32nd)	1270555	available
21.00 R 33 CR	E4	TL	2*	200B			33 - 15.00/3.0	1990 (78.3)	598 (23.5)	58.0 (73/32nd)	1270558	available
35 inch												
24.00 R 35	E4	TL	2*	209B			35 - 17.00/3.5	2174 (85.6)	676 (26.6)	70.0 (88/32nd)	1270556	available
24.00 R 35 CR	E4	TL	2*	209B			35 - 17.00/3.5	2174 (85.6)	676 (26.6)	70.0 (88/32nd)	1270559	available



# Technical Data

## ContiEarth

### EM-Master E3/L3

*Radial Tire*

Tire size	TRA code	Type	Transport		Loader		Rim	Overall diam. mm (inch)	Overall width mm (inch)	Tread depth mm (32")	Article no.	
			SR/PR	LI/SS	SR/PR	LI/SS						
25 inch												
17.5 R 25	E3/L3	TL	2*	167B	2*	182A2	25 - 14.00/1.5	1344 (52.9)	461 (18.1)	30.0 (38/32nd)	1270565	available
20.5 R 25	L3	TL			1*	186A2	25 - 17.00/2.0	1467 (57.8)	531 (20.9)	33.0 (42/32nd)	1270623	available
20.5 R 25	E3/L3	TL	2*	177B	1*	186A2	25 - 17.00/2.0	1477 (58.1)	531 (20.9)	37.0 (47/32nd)	1270517	available
23.5 R 25	E3/L3	TL	2*	185B	1*	195A2	25 - 19.50/2.5	1594 (62.8)	617 (24.3)	39.0 (49/32nd)	1270516	available
26.5 R 25	E3/L3	TL	2*	193B	2*	209A2	25 - 22.00/3.0	1736 (68.3)	691 (27.2)	41.0 (52/32nd)	1270515	available
29.5 R 25	E3/L3	TL	2*	200B	2*	216A2	25 - 25.00/3.5	1843 (72.6)	759 (29.9)	46.0 (58/32nd)	1270514	available
750/65 R 25	E3/L3	TL	2*	190B	1*	202A2	25 - 24.00/3.0	1610 (63.4)	754 (29.7)	42.5 (54/32nd)	1270547	available
29 inch												
775/65 R 29	E3/L3	TL	2*	195B	1*	206A2	29 - 24.00/3.5	1736 (68.3)	774 (30.5)	44.0 (55/32nd)	1270572	available
875/65 R 29	E3/L3	TL	2*	203B	1*	214A2	29 - 28.00/3.5; 27.00/3.0	1857 (73.1)	868 (34.2)	48.0 (60/32nd)	1270548	available

### EM-Master E4/L4

*Radial Tire*

Tire size	TRA code	Type	Transport		Loader		Rim	Overall diam. mm (inch)	Overall width mm (inch)	Tread depth mm (32")	Article no.	
			SR/PR	LI/SS	SR/PR	LI/SS						
25 inch												
23.5 R 25	E4/L4	TL	2*	185B	1*	195A3	25 - 19.50/2.5	1609 (63.3)	603 (23.7)	49.0 (62/32nd)	1270562	available
26.5 R 25	E4/L4	TL	2*	193B	2*	209A4	25 - 22.00/3.0	1739 (68.5)	697 (27.4)	52.0 (66/32nd)	1270563	available
29.5 R 25	E4/L4	TL	2*	200B	2*	216A5	25 - 25.00/3.5	1852 (72.9)	780 (30.7)	59.0 (74/32nd)	1270564	available
750/65 R 25	E4/L4	TL	2*	190B	1*	206A6	25 - 24.00/3.0	1624 (63.9)	754 (29.7)	56.0 (71/32nd)	1270606	available
29 inch												
875/65 R 29	E4/L4	TL	2*	203B	1*	214A7	29 - 28.00/3.5	1881 (74.1)	874 (34.4)	60.0 (76/32nd)	1270607	available

All radial tires (RDT-Master, EM-Master, LD-Master and DumperMaster) are delivered with sensors ex factory.



# Technical Data

## ContiMine

### LD-Master Traction

Radial Tire

Tire size	TRA code	Type	Transport		Loader		Rim	Overall diam. mm (inch)	Overall width mm (inch)	Tread depth mm (32")	Article no.	
			SR/PR	LI/SS	SR/PR	LI/SS						
25 inch												
23.5 R 25	L5	TL			2*	201A2	25 - 19.50/2.5	1650 (65.0)	609 (24.0)	79.0 (100/32nd)	1270609	available
26.5 R 25	L5	TL			2*	209A2	25 - 22.00/3.0	1789 (70.4)	685 (27.0)	88.0 (111/32nd)	1270602	available
29.5 R 25	L5	TL			3*	221A2	25 - 25.00/3.5	1894 (74.6)	752 (29.6)	96.0 (121/32nd)	1270604	available
29 inch												
875/65 R 29	L5	TL			2*	221A2	29 - 27.00/3.0	1899 (74.8)	870 (34.3)	89.0 (112/32nd)	1270637	In preparation
33 inch												
35/65 R 33	L5	TL			3*	229A2	33 - 28.00/3.5	2065 (81.3)	888 (35.0)	97.0 (122/32nd)	1270560	available

### LD-Master Rock

Radial Tire

			Transport		Loader			Overall diam.	Overall width	Tread depth	
Tire size	TRA code	Type	SR/PR	LI/SS	SR/PR	LI/SS	Rim	mm (inch)	mm (inch)	mm (32")	Article no.
25 inch											
26.5 R 25	L5	TL			3*	214A2	25 - 22.00/3.0	1790 (70.5)	703 (27.7)	93.0 (117/32nd)	1270624 In preparation
29.5 R 25	L5	TL			3*	221A2	25 - 25.00/3.5	1895 (74.6)	780 (30.7)	99.0 (125/32nd)	1270625 In preparation
33 inch											
35/65 R 33	L5	TL			3*	229A2	33 - 28.00/3.5	2066 (81.3)	900 (35.4)	94.0 (118/32nd)	1270561 available

### DumperMaster

Radial Tire

Tire size	TRA code	Type	Transport		Loader		Rim	Overall diam. mm (inch)	Overall width mm (inch)	Tread depth mm (32")	Article no.	
			SR/PR	LI/SS	SR/PR	LI/SS						
25 inch												
26.5R25	E4/L4	TL	4*	210/A8	3*	214/A2	25 - 22.00/3.0	1769 (69.6)	690 (27.2)	57 (72/32nd)	1270519	available
29.5R25	E4/L4	TL	4*	217/A8	3*	221/A2	25 - 25.00/3.5	1870 (73.6)	774 (30.5)	59 (74/32nd)	1270520	available
33 inch												
35/65R33 (875/65 R33)	E4/L4	TL	4*	225/A8	3*	229/A2	33 - 28.00/3.5	2056 (80.9)	877 (34.5)	60 (76/32nd)	1270521	available
35/65R33 (875/65 R33) LC	E4/L4	TL	4*	225/A8	3*	229/A2	33 - 28.00/3.5	2056 (80.9)	877 (34.5)	60 (76/32nd)	1270598	available

LC = Long Cycle. Specialized for ADT operations haulage of up to 14 km distance per hour.

All radial tires (RDT-Master, EM-Master, LD-Master and DumperMaster) are delivered with sensors ex factory.



# Technical Data

## ContiMine

### ScoopMaster



Tire size	TRA code	Type	Transport		Loader		Rim	Overall diam. mm (inch)	Overall width mm (inch)	Tread depth mm (32")	Article no.	
			SR/PR	LI/SS	SR/PR	LI/SS						
24 inch												
12.00 - 24	L5S	TT			20	175A2	8.0-24; 8.5-24	1269 (50.0)	321 (12.6)	57.0 (72/32nd)	1230079	available
25 inch												
17.5 - 25	L5S	TL			20	181A2	25 - 14.00/1.5	1416 (55.7)	437 (17.2)	69.0 (87/32nd)	1270566	available
18.00 - 25	L5S	TL			28	199A2	25 - 13.00/2.5	1666 (65.6)	507 (20.0)	88.0 (111/32nd)	1270567	available
26.5 - 25	L5S	TL			36	209A2	25 - 22.00/3.0	1798 (70.8)	670 (26.4)	95.0 (120/32nd)	1270568	available
29.5 - 25	L5S	TL			34	212A2	25 - 25.00/3.5	1893 (74.5)	761 (30.0)	100.0 (126/32nd)	1270569	In preparation

### DrillMaster



Tire size	TRA code	Type	Transport		Loader		Rim	Overall diam. mm (inch)	Overall width mm (inch)	Tread depth mm (32")	Article no.	
			SR/PR	LI/SS	SR/PR	LI/SS						
24 inch												
12.00-24	L4	TL	-	-	28	187/A2	8.50-24/1.3	1242 (48.9)	315 (12.4)	28 (35/32nd)	1230076	available
14.00-24	L4	TT	-	-	30	195/A2	10.00-24/1.5	1352 (53.2)	386 (15.2)	31 (39/32nd)	1230077	available

SR: Star Rating for Radial Tires  
 PR: Ply Rating for x-ply tires  
 LI: Load Index  
 SS: Speed Symbol

Specifications are subject to change without notice  
 For further technical information, see data sheets  
 \* For details regarding product availability, please  
 contact your local sales representative.



# Technical Data

## Compact Construction

### MPT91

Radial Tire

Tire size	Type	SR/PR	LI/SS	Rim	Overall diam. mm (inch)	Overall width mm (inch)	Tread depth mm (32")	Article no.	
20inch									
275/80 R 20	TL		137/135K	9x20	950 (37.4)	275 (10.8)	16.5 (25/32nd)	0574032	available
365/80 R 20	TL		158K	11x20	1091 (43.0)	365 (14.4)	19.5 (21/32nd)	0574031	available

### MPT80

Radial Tire

Tire size	Type	SR/PR	LI/SS	Rim	Overall diam. mm (inch)	Overall width mm (inch)	Tread depth mm (32")	Article no.	
20 inch									
10.5R20 MPT (275/80R20)	TL	10	128/J	9x20	950 (37.4)	267 (10.5)	16.5 (21/32nd)	0574007	available
10.5R20 MPT (275/80R20)	TL	12	132/J	11x20	950 (37.4)	267 (10.5)	16.5 (21/32nd)	0574155	available
10.5R20 MPT (275/80R20)	TL	14	134/J	9x20	950 (37.4)	267 (10.5)	16.5 (21/32nd)	0574006	available
12.5R20 MPT (335/80R20)	TL	16	139/J	11x20	1030 (40.6)	318 (12.5)	16.5 (21/32nd)	0574156	available
12.5R20 MPT (335/80R20)	TL	22	147/J	11x20	1030 (40.6)	318 (12.5)	16.5 (21/32nd)	0574162	available
14.5R20 MPT (365/80R20)	TL	10	132/J	11x20	1090 (42.9)	368 (14.5)	17.5 (22/32nd)	0574185	available
14.5R20 MPT (365/80R20)	TL	18	143/J	11x20	1090 (42.9)	368 (14.5)	17.5 (22/32nd)	0574186	available
14.5R20 MPT (365/80R20)	TL	22	152/J	11x20	1090 (42.9)	368 (14.5)	17.5 (22/32nd)	0574188	available

### MPT81

Radial Tire

Tire size	Type	SR/PR	LI/SS	Rim	Overall diam. mm (inch)	Overall width mm (inch)	Tread depth mm (32")	Article no.	
16 inch									
315/55R16 MPT	TL	120/K	124/F	11x16	753 (29.6)	315 (12.5)	16.5 (21/32nd)	0574012	available
20 inch									
275/80R20 MPT	TL	134/K		9x20	948 (37.3)	275 (10.8)	16.5 (21/32nd)	0574013	available
335/80R20 MPT	TL	147/K		11x20	1044 (41.1)	335 (13.2)	16.5 (21/32nd)	0574014	available
365/80R20 MPT	TL	152/K		11x20	1092 (43)	365 (14.4)	19.5 (25/32nd)	0574015	available

### 70E

Radial Tire

		Transport		Loader				Overall diam.	Overall width	Tread depth	
Tire size	Type	SR/PR	LI/SS	SR/PR	LI/SS	Homologation	Rim	mm (inch)	mm (inch)	mm (32")	Article no.
18 inch											
325/70R18 MPT	TL		125/E		138/A2	-	9x18	933 (36.7)	328 (12.9)	22.5 (28/32nd)	4740440 available
365/70R18	TL		135/B		146/A2	UNECE R-106*	11x18	969 (38.1)	365 (14.4)	22.5 (28/32nd)	5740160 available
20 inch											
335/80R20	TL		136/B		147/A2	UNECE R-106*	11x20	1040 (41)	335 (16.2)	22.5 (28/32nd)	5740170 available
365/80R20	TL		141/B		153/A2	UNECE R-106*	11x20	1098 (43.2)	365 (14.4)	25 (31/32nd)	5740180 available
405/70R20	TL		143/B		155/A2	UNECE R-106*	13x20	1064 (41.9)	405 (15.9)	25 (31/32nd)	5740190 available



# Technical Data

## Compact Construction

### CompactMaster EM

Radial Tire

Tire size	TRA code	Type	Transport		Rim	Overall diam. mm (inch)	Overall width mm (inch)	Tread depth mm	Article no.	
			SR/PR	LI/SS						
24 inch										
460/70R24 (17.5LR24)	R4	TL	159/A8	159/B	DW15L, TW15L	1245 (49)	445 (17.5)	33 (42/32nd)	0670003	available
500/70R24 (19.5LR24)	R4	TL	164/A8	164/B		1310 (51.6)	500 (19.5)	33 (42/32nd)	0670005	available

### CompactMaster AG

Radial Tire

Tire size	TRA code	Type	Transport		Rim	Overall diam. mm (inch)	Overall width mm (inch)	Tread depth mm	Article no.	
			SR/PR	LI/SS						
24 inch										
460/70R24 (17.5LR24)	R4	TL	159/A8	159/B	DW15L, TW15L	1244 (49)	445 (17.5)	36 (45/32nd)	0670003	available
500/70R24 (19.5LR24)	R4	TL	164/A8	164/B		1310 (51.6)	500 (19.5)	36 (45/32nd)	0670004	available

### CompactMaster SkidSteer

Solid Tire

Tire size	Type	LI/SS	Rim	Overall diam. mm (inch)	Overall width mm (inch)	Tread depth mm (inch)	Weight kg (lbs)	Static load kg (lbs)	Article no.	
28 inch										
31 X 10 - 20/7.50	Solid	147A5	7.5-20	782 (30.8)	235 (9.3)	33.0 (42/32nd)	67.6 (149)	4645 (10240)	1376517	available
33 X 12 - 20/7.50	Solid	156A5	7.5-20	835 (32.9)	270 (10.6)	40.0 (50/32nd)	92.9 (204)	6040 (13315)	1376518	available

### TeleMaster

Solid Tire

Tire size	Type	LI/SS	Rim	Overall diam. mm (inch)	Overall width mm (inch)	Tread depth mm	Article no.	
28 inch								
315/95-28	Solid	175/A6	8.50-28	1283 (50.5)	302 (11.89)	60 (76/32nd)	1376465	available
360/85-28	Solid	183/A6	10.00-28	1330 (52.4)	340 (13.39)	65 (82/32nd)	1376464	available
315/85-20/8.50	Solid	164/A5	8.5 - 20	1034 (40.71)	302 (11.89)	55 (70/32nd)	1376516	available

SR: Star Rating for Radial Tires  
 PR: Ply Rating for x-ply tires  
 LI: Load Index  
 SS: Speed Symbol

Specifications are subject to change without notice  
 For further technical information, see data sheets  
 \* For details regarding product availability, please  
 contact your local sales representative.



# Intelligent Earthmoving

## Components



### ContiConnect Web Portal

- Browser-based web interface for access to data, statistics and reports
- Enables real-time monitoring of entire fleet's tire status



### ContiConnect App

- Creation, management and configuration of vehicles
- Read out sensor data via Bluetooth and transmit it to the IoT platform



### Display in the driver's cabin

- Display shows the status of the tire and indicates 7 different types of warnings and the related tire position in the driver's cabin



### Hand-Held Tool (HHT)

- The connectivity component that receives data wirelessly from the tire sensor upon returning to the yard



### Tire Sensor

- Tire Monitoring functionality
- Pressure & temperature
- Mileage & battery estimation
- Bluetooth connectivity



### Valve-Cap Sensor

- Replaces the valve cap with the sensor cap
- Relays accurate tire pressure readings for all monitoring solutions



### Yard Reader Station (YRS)

- The connectivity component that receives data wirelessly from the tire sensor upon returning to the yard.



### Receiver/Central Control Unit (CCU)

- Receives signals from the tire sensors evaluates data and processes it
- Installed in the vehicle



### In-cabin Unit

- Receives signals directly from the sensors and enabler units and sends them to the IoT platform



### Trailer Unit

- Receives signals directly from the sensors and enabler units and sends them to the IoT platform

For inside usage

For outside usage



### Enabler Unit

- Receives signals from the tire sensors evaluates data and processes it Installed in the vehicle



### Cleaning Scraper & Mounting Tool (for retrofitment of sensor)

- Scraper for pretreating the inner layer of the tire
- Pressing tool including insert
- Tool for pressing on the tire sensor during bonding



	Description	Article No.
● <b>Basic Kits</b>	Base Kit CCU	17341150000
	Base Kit CCU with receiver	17341160000
	Base Kit CCU Coach with receiver	17341200000
	Base Kit Display	17341210000
	3rd Party Telematic Harnesses	17341220000
● <b>Sensor Kits</b>	KIT CPC Partner Case	17341350000
	Base Kit 6 Tire Sensors	17341190000
	Base Kit 6 Tire Sensors with blue containers	17342470000
	Set Sensor Container Gen 2	17342050000
	Set Sensor Container (blue) Gen 2	17341860000
	Tire Sensor Gen 2	17342010000
	Valve Cap Sensor	17342540000
	6 OTR patches w/o tire sensor	17342390000
	4 OTR patches w/o tire sensor	17342440000
	6 OTR patches incl cont blue + sensor	17342450000
	4 OTR patches incl cont blue + sensor	17342460000
	Live Truck 1 Enabler	17342510000
	Live Truck 1 Enabler with Sensors	17342560000
	Live Truck 2 Enablers	17343050000
	Live Truck 2 Enablers with sensors	17342580000
● <b>Advanced Kits (Yard / Live)</b>	Live Trailer	17342520000
	Live Trailer with Sensors	17342570000
	Live Enabler Kit	17342530000
	KIT Yard Reader Solution GSM EU	17341470000
	KIT Yard Reader Solution LAN	17341480000
	Bracket (additional receiver)	17340020000
	Bracket (central control unit)	17340030000
	Set Central control unit Truck/Bus	17340600000
	Additional receiver + Impact protection	17340560000
	Impact protection (add. receiver)	17340550000
<b>CPC Accessories and Spare Parts</b>	Sub-harness A	17340080000
	Sub-harness B	17340070000
	Sub-harness C	17340060000
	Sub-harness D	17340090000
	Sub-harness D Large (13 Mtrs)	17340670000
	Sub-harness E	17340870000
	Sub-harness F+G	17340160000
	Sub-harness H	17340170000
	Sub-harness K	17340700000
	Sub-harness L	17340690000
	Display	17340110000
	Display Holder	17342250000
	Display Holder Dashboard	17342260000
	Pressure Check Indicator	17340130000
	Fuse kit F	17340360000
	Connector Kit A+B+C	17340180000

	Description	Article No.
<b>Live Accessories and Spare Parts</b>	Enabler Unit	17342210000
	Bracket Enabler Unit (Short)	17342190000
	Bracket Enabler Unit (Long)	17342500000
	Power Supply Harness Enabler Unit	17342200000
	In Cabin Unit incl. Bracket	17342160000
	In-Cabin Unit FMS Connector	17342280000
	In-Cabin Unit FMS Splitter Connector	17342480000
	In-Cabin Unit DTCO Connector	17342290000
	In-Cabin Unit Open Connector	17342300000
	Trailer Unit	17342170000
<b>Sensor Accessories and Spare Parts</b>	Bracket Trailer Unit	17342490000
	Power Supply Harness Trailer Unit	17342330000
	General Safety Notes	17342240000
	Rubber Container	17340040000
	12 Tire Containers	17340720000
	Rubber Container (blue)	17341850000
	Set Cleaning Scraper	17341300000
	Mounting tool (Tire Sensor)	17341750000
	Insert - Mounting Tool	17341760000
	Insert Tool (Tire Sensor)	17341410000
<b>HHT Accessories and Spare Parts</b>	Spatula	17340210000
	Glue CB2250 4,8 g	17341120000
	Glue CB2250 9,6g	17340200000
	Optional Container Fixation OTR (Blue)	17342150000
	OTR Adapter-Valve Sensor-T	17343190000
	OTR Adapter-Valve Sensor-STRT	17343200000
	Sticker small	17341090000
	Sticker big	17341100000
	Valve Caps 50	17341710000
	Set Handheld tool	17340520000
	Handheld tool	17340230000
	Diagnosis cable (handheld tool)	17340240000
	Repl. Fuse Diag cable	17340590000
	Charger (handheld tool)	17340530000
	USB cable (handheld tool)	17340540000

\*Please get in contact with our sales team for detailed information



**Continental Reifen Deutschland GmbH**

Commercial Specialty Tires

Continental Plaza 1, 30175 Hannover, Germany

Phone: +49 511 938 - 01

[www.continental-tires.com](http://www.continental-tires.com)